

PS Data Module and PumpScanner for Android™ App



Solar pumping joins the information revolution

The LORENTZ PS DataModule is an integral data logger and remote control device for the whole PS range of helical, centrifugal and surface pumps. The PS DataModule and PumpScanner for Android™ App open new opportunities in drinking water supply for people and livestock, irrigation and swimming pool applications. The PS DataModule collects performance data from the pump system and stores it for periodic collection. The PS DataModule uses Bluetooth™ to communicate with the LORENTZ PumpScanner Android™ App allowing secure data collection without physical connections.

The PS DataModule opens up new opportunities to improve customer service and for new commercial models.

Features

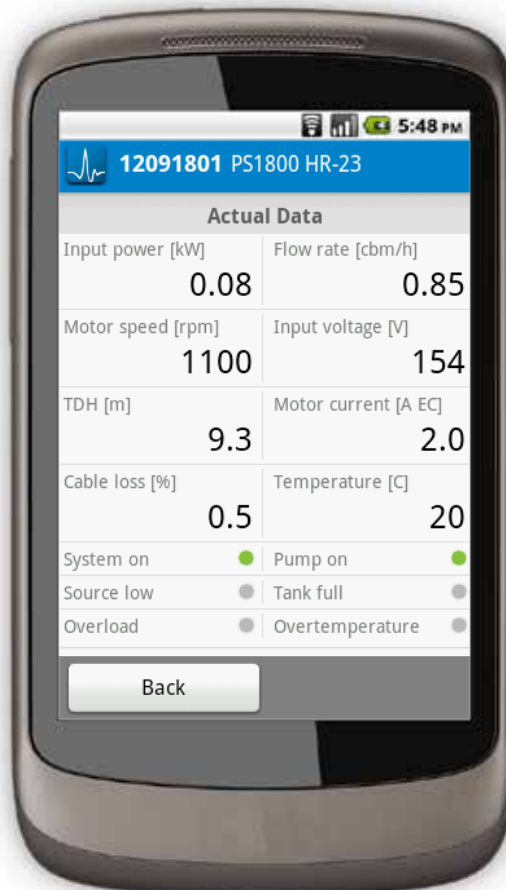
- Low cost add on module
- Manage multiple pumps
- Provides data real-time and stores
 - voltages
 - currents
 - input and output power
 - calculated flow rates
 - operating time
 - heads
 - pump speed
 - cable losses
 - temperature, and more
- Bluetooth™ connectivity for secure contactless data transfer
- Stores up to 10 years of data (at 10 minute frequency)
- Real time and stored data
- Two-way communication to program pump speeds and operating times
- Connections for additional external sensors
- LORENTZ PumpScanner for Android™ App for viewing performance data
- PumpScanner is available in Customer and Service Engineer versions
- Compatible with LORENTZ GSM remote access services

Customer service improvement

- Quickly identify any pump performance issues
- Reduce fault finding time and cost
- Improve technician image – very professional tools available on low cost Android™ smart phones
- Provide clear pump and water source performance information for customers
- Identify any pro-active service work that needs to be carried out ahead of potential failures

New commercial opportunities

- Pay on use – accurate flow and time measurements allow for pay per volume of water or pay per hour of use charging models to be developed.
- Shared pump ownership – monitoring allows for pump shared ownership and rental models.
- Pro-active maintenance service – demonstrate to a customer why the pump should be cleaned/serviced



for Android™

Pictures may differ from actual product

Android is a trademark of Google Inc. The Android robot is reproduced or modified from work created and shared by Google and used according to terms described in the Creative Commons 3.0 Attribution License.

To find out more visit www.lorentz

BERNT LORENTZ GmbH & Co. KG

Kroegerskoppel 7, 24558 Henstedt-Ulzburg, Germany, Tel. +49 (0) 4193 7548-0

All specifications and information are given with good intent, errors are possible and products may be subject to change without notice. Pictures may differ from actual products depending on local market requirements and regulations. A pump system consists of a controller, motor and pump end. Multiple pumps/pump ends are shown to represent the wide range of pumps (over 100) that LORENTZ has.

Sun. Water. Life.